

ICU SENIOR RESEARCH FELLOW / CLINICAL RESEARCH SPECIALIST
AUSTRALIAN AND NEW ZEALAND INTENSIVE CARE-RESEARCH CENTRE (ANZIC-RC)
DEPARTMENT OF EPIDEMIOLOGY AND PREVENTIVE MEDICINE, MONASH UNIVERSITY

We are seeking a highly motivated intensive care clinician (doctor, nurse, allied health professional) with an interest in clinical intensive care research to become a key member of our productive and dynamic research team for one year.

The ANZIC-RC is a major clinical research methods centre for intensive care research with strong links to the ANZICS Clinical Trials Group (ANZICS-CTG). The ANZIC-RC is currently coordinating numerous large phase II and phase III research projects including STATInS (atorvastatin in sepsis) and ARISE (early goal directed therapy). Furthermore the ANZIC-RC is currently establishing two large novel traumatic brain injury studies (POLAR-Prophylactic hypothermia & EPO-TBI-Erythropoietin). In addition to assisting with all aspects of the design and conduct of these and other clinical research projects, the successful candidate will be encouraged and fully supported to conduct an individual research project. This research project may be used to complete the formal project requirement of specialist training program.

The successful applicant will have completed an undergraduate medical/nursing/science/allied health degree and have experience working in the intensive care environment. You will be undertaking or have completed a relevant post-graduate qualification (refer to position description for details). It is also desirable that the successful candidate will have prior research experience or a publication record. However, as part of the ANZIC-RC commitment to clinical research training, intensive care clinicians without an established research background may be considered for this position. These applicants will be provided with the additional supervision and training necessary to maximise this opportunity.

This is a one year rotating position which aims to provide early career clinicians with exposure to epidemiology and research practices. It is a truly unique opening which will give the successful applicant the skills and expertise necessary to conduct high quality independent clinical research. This knowledge can then be taken “back to the bedside” as the clinician progresses their clinical career.

Salary:	\$92,169 - \$106,277 pa (Level C) plus superannuation and clinical loading where appropriate
Location:	The Alfred Centre; Alfred Hospital, Melbourne
Duration:	Twelve month appointment
Enquiries contact:	Enquires Siouxzy Morrison (ANZIC-RC Executive Officer) at Siouxzy.Morrison@monash.edu
Applications:	<p>Apply online via "Jobs at Monash" website. Please include:</p> <ul style="list-style-type: none"> • your curriculum vitae with the names and contact details of 3 referees • an outline of how your experience, skills, qualifications and knowledge meet the key selection criteria listed in the position description • a covering letter quoting the advertisement reference number if required <p>Refer to the Monash website for further application instructions http://cerebus.sss.monash.edu.au/employ/</p>
Commencement Date:	February 2011

POSITION DESCRIPTION

POSITION TITLE: Senior Research Fellow / Clinical Research Specialist – Australian and New Zealand Intensive Care Research Centre (ANZIC-RC)

POSITION NUMBER:

DEPARTMENT/UNIT: Department of Epidemiology & Preventive Medicine

FACULTY/DIVISION: Medicine, Nursing & Health Sciences

CLASSIFICATION: Level C

FRACTION: 1.0

EFFECTIVE DATE: July 2007

INCUMBENT:

SIGNATURE _____ **DATE** _____

APPROVED BY SUPERVISOR: Professor Jamie Cooper

TITLE: Director ANZIC-RC

SIGNATURE _____ **DATE** _____

DEPARTMENT/UNIT HEAD: Professor John McNeil

TITLE: Head of Department

SIGNATURE _____ **DATE** _____

DEAN/DIVISIONAL DIRECTOR: Professor John McNeil

TITLE: Head of School

SIGNATURE _____ **DATE** _____

POSITION DESCRIPTION
ORGANISATIONAL CONTEXT:
Location:

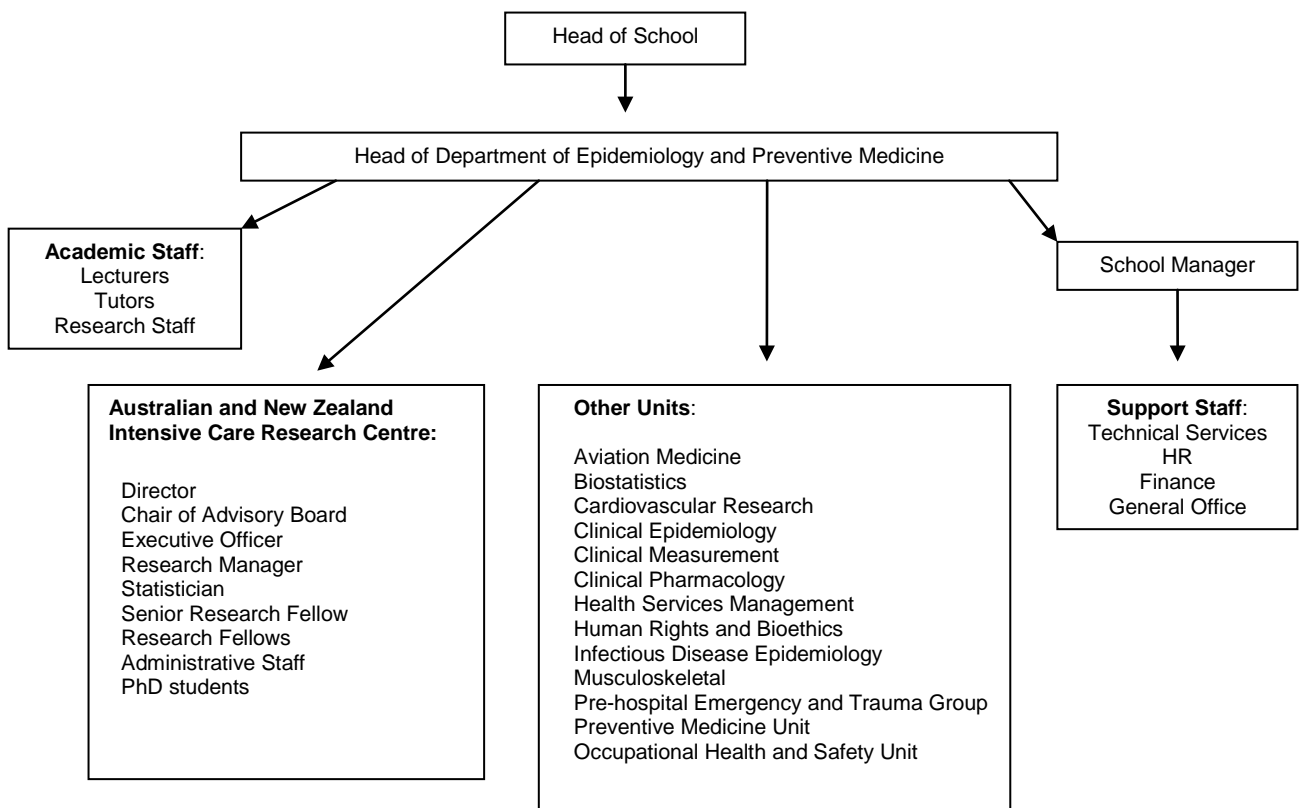
ANZIC Research Centre
 Department of Epidemiology & Preventive Medicine
 School of Public Health and Preventive Medicine
 Monash University
 L6, The Alfred Centre, B lobby
 99 Commercial Road
 Melbourne
 VIC 3004

Reports to:

The NHMRC-funded Australian and New Zealand Intensive Care Research Centre (ANZIC-RC), is established within the Dept of Epidemiology & Preventive Medicine, Monash University.

We are seeking a highly motivated intensive care clinician (doctor, nurse, scientist, allied health) with appropriate postgraduate qualifications or equivalent, who is interested in pursuing a career in intensive care research to:

- Assist in the management of phase 1, 2, and 3 clinical trials in Intensive Care
- Train in clinical research methodology
- Assist with writing and publication of research trials
- Enhance the profile of intensive care research in ANZ nationally and internationally



The Monash University Department of Epidemiology and Preventive Medicine is one of four major departments located in the Monash School of Public Health and Preventive Medicine (SPHPM) in the Faculty of Medicine, Nursing and Health Sciences. The SPHPM also encompasses the Department of Forensics, the Centre for Obesity Research and Education (CORE) and the Monash Institute of Health Services Research.

The position of Senior Research Fellow - Intensive Care is located at the DEPM in the AMREP research facility alongside the Alfred Hospital, Melbourne. The DEPM plays a prominent role in public health medicine in Australia. The core skills of the department relate to epidemiology (the study of the distribution, risk factors and causes of disease) and its application to problems in clinical medicine and public health.

As the Senior Research Fellow, you will report to the ANZIC-RC management team, the Executive Officer and Professors Jamie Cooper and Rinaldo Bellomo. The ANZIC-RC is a major clinical research methods centre for Intensive Care in Australia and New Zealand, and has been funded by NHMRC following numerous highly successful major trials from the ANZICS Clinical Trials Group.

KEY RESULTS AREAS AND RESPONSIBILITIES:

Under the supervision of the ANZIC-RC board, and in conjunction with the management team, the Senior Research Fellow will undertake research activities relating to works undertaken by the ANZIC-RC. The specific tasks of the Senior Research Fellow will involve:

- Undertaking independent and supervised study in the field of research methodology and trial design
- Development of study protocols, case report forms and other study related materials
- Participate in and contribute to the work of ongoing ANZIC-RC research projects
- Preparation of research proposal submissions to external funding bodies including the NHMRC and Intensive care foundation
- Preparation of ethics submissions and progress reports
- Drafting of manuscripts for submission to peer review journals
- Coordination and supervision of literature searching for research articles
- Production of conference and seminar papers
- Supervision of research-support and administrative staff
- Communicate with and promote research links with external bodies
- Attendance at conferences and seminars in the field of critical care research, subject to ANZIC-RC staff travel policy
- Occasional contributions to the teaching program within the field of the staff member's research
- Attendance at meetings associated with research or the work of the organisational unit to which the research is connected
- Various research related administrative functions

KEY SELECTION CRITERIA:

ESSENTIAL

- Completion of an undergraduate medical/nursing/science/allied health degree.
- Undertaking or completion of specialist training in critical care medicine (FJFICM, FRACP, FACEM FANZCA) or relevant post-graduate qualification (e.g. PhD, MD, MPH)
- Experience working in the critical care environment
- Experience in planning, implementing and completing a research project
- Proficient scientific writing skills
- Competent in the use of Microsoft Office programs (Word, Excel, Power Point etc)
- Competent presentation and public speaking skills

DESIRABLE

- Working knowledge of ethical issues affecting the conduct of intensive care research
- Well developed problem solving skills
- Well developed communication and interpersonal skills
- Self directed and able to work unsupervised
- Capacity to work collaboratively with other members of a research team
- Ability to conduct a literature search

OTHER JOB RELATED INFORMATION:

GENERAL

- Comply with Monash University personnel policies and procedures
- Comply with Monash University health & safety policies
- Comply with ANZIC-RC standard operating procedures
- Comply with the Monash University hospital dress code policy
- Adherence to Monash University policy relating to confidentiality
- The Senior Research Fellow Position is one year position which commences annually in February